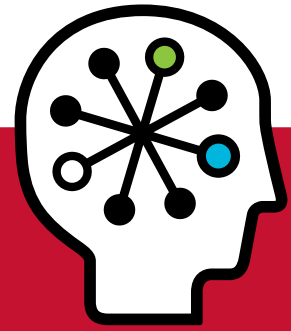




HP solutions for automated network lifecycle management

Reducing costs and increasing agility through end-to-end automated network lifecycle management



- Unify automation across network operations.
- Maximize service availability and performance.
- Provide global visibility and enforcement for compliance.

According to Cybermedia Research, networks are doubling in size every two years, and this rapid growth has IT organizations scrambling to manage them effectively. If they don't succeed, the businesses they support face dire consequences: Aberdeen research shows that the cost of network downtime is \$69,000 per minute, and Gartner points out that 40 percent of problems are found by customers—adding the long-term risk of lost customer loyalty to the immediate problem of revenue lost to outages.

Faced with this serious challenge, most IT departments find themselves saddled with inefficient approaches to network management, processes in silos, too many handoffs and ineffective point tools. In an environment of multiple complex operations and frequent change, too many IT groups are finding that their outmoded manual processes yield long projects, poor policy compliance, slow time-to-repair, lethargic rollout of new services, and little visibility into network management processes and results.

These organizations need to transform their network management processes from costly, manual methods to fully automated, proactive network fault and performance management. The HP solution for automated network lifecycle management offers both a strategy and an integrated portfolio of applications to accomplish this goal.

The HP solution

The HP solution for automated network lifecycle management is an integrated set of best-of-breed products that spans the network management domain to give you holistic network management.

For unified fault and performance management, the solution includes HP Network Node Manager i-series (HP NNMi) software. HP NNMi delivers continuous

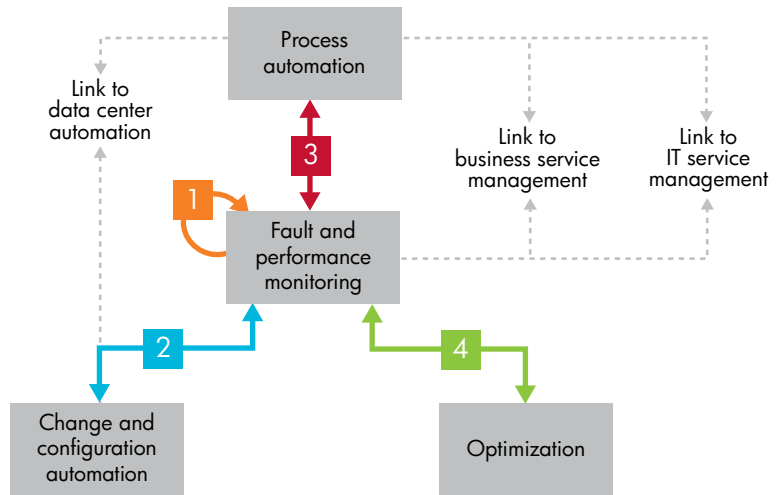
network discovery, unified fault and performance monitoring, and automated root-cause analysis for dynamic networks. It enables network management teams to detect, locate and diagnose faults quickly; analyze the business impact of outages; and ultimately increase network operations staff efficiency and productivity.

To help you cope with the explosive growth and increasing complexity of networks, HP Network Automation software automates change and configuration updates. This eliminates time-consuming and error-prone tasks, and reduces the burden that compliance and security place on the IT organization. It provides real-time network visibility and control and automates change detection and configuration updates, policy enforcement, provisioning and patching. HP Network Automation gives you a single platform to manage all network devices, regardless of who manufactured them.

Since automating processes is just as important as automating specific tasks in today's complex networks, the HP solution includes HP Operations Orchestration software. This enables you to enforce best practice processes such as ITIL, standardize execution of key process workflows that span tools and groups, and speed up incident discovery and resolution. HP Operations Orchestration automates routine tasks to improve accuracy and efficiency and reduce costs.

The last two components of the solution are HP Performance Insight software and HP Route Analytics Management software. HP Performance Insight enables you to measure network service levels and capacity even in the face of massive amounts of data and multiple reporting tools. This highly flexible, scalable cross-domain reporting solution delivers comprehensive reporting, forecasting and trending for a wide array of network technologies. HP Route

- 1** Unified fault and performance monitoring
Improve network availability and performance with a model-based network management solution
- 2** Change and configuration automation
Comprehensive network automation spanning all tasks from provisioning and change management to compliance enforcement and reporting
- 3** Process automation
Automate common and repeatable IT processes across all infrastructure tiers, IT groups and systems
- 4** Optimization
Optimize local- and wide area-network utilization and performance



Analytics Management monitors routing services in real time, captures topologies and events for forensics, performs simulation and modeling for routing changes, and analyzes traffic via a streamlined set of collection points. It gives your network teams the visibility into routing and traffic they need to diagnose complex routing problems and reduce the risk of network changes.

This standards-based solution is supported by major customer-support hubs around the globe, professional services that help you leverage proven best practices, and HP partners who help you use HP solutions to solve key business problems and accelerate business outcomes.

The HP approach

The HP solution is based on an approach that begins with monitoring network performance and availability, focuses next on automating network management functions, and then addresses global policy compliance and enforcement.

Unify automation for network operations.

The process begins by establishing a foundation of unified network fault, availability, performance, change and configuration, and process automation. By putting these solutions in place and using them to automate management across the entire network lifecycle, you can improve efficiencies for key tasks, such as the rate of provisioning and network configuration, by as much as 92 percent.

Maximize service availability and performance.

With the foundation in place, you can turn your attention to proactive monitoring and optimization of your network using automated root-cause analysis, change control and performance management—to reduce downtime minutes by as much as 55 percent.

Ensure global compliance visibility and enforcement.

The last step in the approach is establishing and enforcing compliance with regulations and best practices by automating reporting and audits across Sarbanes-Oxley (SOX), the Health Insurance Portability and Accountability Act (HIPAA), PCI, ITILv3 and security policies. By enforcing compliance across all operations, you achieve global consistency and accuracy and can shorten compliance audit and reporting timelines by as much as 98 percent.

Let's get started

HP can tailor an automated network lifecycle management solution to your needs and help you apply leading-edge tools and best practices to the management of complex, rapidly growing networks. Learn more about how HP can help your business increase agility while reducing cost at www.hp.com/go/anlm.

We're ready to put our vast resources and expertise to work with you. Let's start with a discussion of your business strategies, tactics and goals. Contact your HP representative today. Or learn more about HP automated network lifecycle management at www.hp.com/go/bto and www.hp.com/services.

Technology for better business outcomes

To learn more, visit www.hp.com/go/software

©2008 Hewlett-Packard Development Company, L.P. The information contained herein is subject to change without notice. The only warranties for HP products and services are set forth in the express warranty statements accompanying such products and services. Nothing herein should be construed as constituting an additional warranty. HP shall not be liable for technical or editorial errors or omissions contained herein.

